

**The Effect of Commission Bans on Household Wealth:
Evidence from OECD Countries**

Steffen Sebastian*, Lukas Noth† und Albert Grafe*

Abstract

In most OECD countries, financial advisors are primarily paid through commissions. This entails a principal agent problem in which the financial advisor has the incentive to sell financial products that maximize his income, not however the return of the investor seeking financial advice. To combat this conflict of interest, countries such as Denmark, Finland or Great Britain introduced commission bans. Our research finds an annual return difference of household wealth between 1.5% to 2% with a sample period from 1997 to 2020 for OECD countries with commission ban versus OECD countries without. This implies that households in commission ban countries can have close to double the amount of wealth compared to household in non-commission ban countries after 40 years. The results support the introduction of commission bans to foster private household wealth formation.

Zusammenfassung

In den meisten OECD-Ländern werden Finanzberater über Provisionen vergütet. Dieses System führt zu einem Principal-Agenten-Problem, bei dem der Finanzberater einen Anreiz hat, Finanzprodukte zu verkaufen, die sein Einkommen maximieren, nicht jedoch die Rendite des Anlegers. Um diesen Interessenskonflikt aufzulösen, haben Länder wie Dänemark, Finnland oder Großbritannien Provisionsverbote eingeführt. Unsere Ergebnisse zeigen, dass zwischen 1997 und 2020 OECD-Länder mit Provisionsverbot eine 1,5% bis 2% höhere jährliche Rendite auf ihr Vermögen erreicht haben. Dies kann nahezu zu einer Verdopplung des Haushaltvermögens nach 40 Jahren führen. Somit sprechen die Ergebnisse für die Einführung von Provisionsverboten zur Förderung der Vermögensbildung privater Haushalte.

JEL: D14, D18, G28

1. Introduction

The question of private household wealth formation is one of eminent importance and relevance. This is especially the case for countries where aging societies increasingly place pressure on social security systems. Ultimately, these countries will have to encourage and facilitate wealth formation outside of crumbling pension systems to secure prosperity.

Optimizing household portfolio choices is of key importance in this respect. Professional financial advice can be helpful as most private households do not have the time nor the education to make individual investment choices. However, households have shown to make poor asset allocation choices. For instance, by their non-participation in the risky asset markets, investors lose about 2 to 6 percent equity premium annually (Calvet, Campbell and Sodini, 2007). Furthermore, households also choose more expensive vehicles within the same asset class. This is worrisome as costs for financial products play a similar if not more pronounced role in determining the performance of an investment (Sharpe, 2013).

Countries including Australia, Denmark, Finland, Great Britain, the Netherlands, New Zealand, and Norway introduced commission bans for the financial industry. The notion behind this policy is that instead of facing a financial conflict of interest, advisors must be paid directly by their customers instead of financial companies such as banks, funds or insurances. The latter entails a principal agent problem, whereby financial advisors have an incentive to sell products of low quality in high quantity to increase their commissions. In most countries commission based financial advice is still the common practice.

Our research sheds light on the connection between household portfolio choices, which effect their investment results, and commission-based systems. To our best knowledge, we are unaware of any academic paper that has tried to do so on a cross-country level to date. Chapter 2 will provide a comprehensive literature overview. The introduction of commission bans is described in Chapter 3. Our data and empirical approach will be introduced in Chapter 4 before we depict and discuss our results in Chapter 5. Chapter 6 will deliver policy recommendations before Chapter 7 concludes our paper.

2. Literature Review

Household portfolio choices differ from institutional investor strategies. Most households do not possess either the knowledge nor the time to make informed decisions. To solve this issue financial advisors, offer support to households. However, as described in the theory of financial intermediation (Santomero, 1984), (Bhattacharya and Thakor, 1993), markets are not perfectly efficient because sellers have more information than buyers.

To begin with, financial decision making is not trivial; household must have a plan over their whole lifetimes. Households are confronted with concerns regarding diversification, how much to save to smooth consumption, and participation to risky assets see e.g., (Markowitz, 1952) and (Calvet, Campbell and Sodini, 2009). This includes a complete overview of the individual financial situation (Yao and Zhang, 2005). In other words, professional financial planning often involves encouraging clients to engage in intertemporal decisions they would otherwise avoid. As a result, (Kramer, 2012) shows that advised accounts are better

diversified. Portfolios missing diversification ranks among those mistakes that are potentially most costly (Gaudecker, 2015).

Yet, the mechanism and incentives behind financial advice far from efficient. (Campbell, 2006) conveys that half of all households do not own equity despite high historical returns and significantly reduced information and transaction costs. In other words, although stock market participation promises high returns, participation is low for private households. This finding is consistent with what has been dubbed the “stock market participation puzzle” in the economic literature (Mankiw and Zeldes, 1991). In theory, financial advice should convey financial knowledge to private households and mediate investments in high yielding assets. Low stock market participation is one aspect that questions the functionality of financial advice and its incentives.

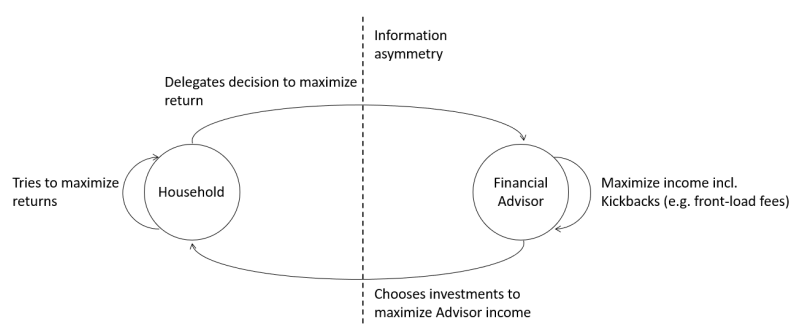
One explanation lies in the structure of the financial industry itself: financial products that maximize commissions for the agents/financial advisors and insurers do not necessarily maximize the customers financial outcome. This means that commission advisors will not de-bias behavioral clients when it is not in their best interest to do so (Anagol, Cole and Sarkar, 2017); a classic principal-agent problem (see Figure 1). For a specialized principal-agent-model for financial advice, see (Golec, 1992). Fees that are automatically deducted are attractive to sellers because they often go unrecognized by consumers (Finkelstein, 2009), which is why commission-based financial advice is consumer unfriendly. (Jones, Lesseig and Smythe, 2005) find that advisors making fund recommendations are more influenced by commissions and profits than by the knowledge of which is the best choice for the investor. Research by Gorter (2012) adds to this by indicating that the quality of (independent) advice increases as commissions are lowered or banned.¹

Furthermore, qualified advisors cannot stand out in the market, as good and bad advisors cannot be easily differentiated by consumers. A phenomenon known as information asymmetry: most consumers are not able to assess the quality of the financial product as its utility only becomes visible long after the product was bought (Akerlof, 1970). This makes financial products so called credence goods (Darby and Karni, 1973). The more complex financial products are, the harder it is for customers to merit the quality of the service provided by the intermediary. The risk of conflicting interests between agent and customer becomes higher (Jong, 2017).

Bas, Bruggert and van der Lijn (2004) demonstrated in the market for mortgages that consumers ended up buying more than average complex mortgages and accepted less favorable interest rates as well as quality when advised based on remunerations. The Great Financial Crisis (GFC) of 2007 can be contended to be a result of this structure, whereby advisors had an incentive to sell mortgages with a high loan amount to increase their commissions.

¹ Hackethal, Haliassos and Jappelli (2012) show that German customers who use a commission-compensated financial adviser have lower performing portfolios net of costs. This underscored by Hoechle *et al.* (2018) finding that the bank’s own mutual funds and structured products are most profitable for the bank, and profits increase with trade size known as scale effects. This includes a high rate of churning among advisors to increase commissions (Hackethal and Inderst, 2013).

Figure 1: Principal Agent Problem in the Financial Industry



Own illustration; based on: Slyke, 2006.

A popular view in academia is that the lack of financial knowledge explains the difficulty for consumers to assess the service quality before and even after purchase of a financial product (Lusardi and Mitchell, 2008).² (Anagol and Kim, 2012) find that insurance agents routinely recommend inferior products to less knowledgeable customers while simultaneously recommending more suitable products to more sophisticated customers. (Bucher-Koenen *et al.*, 2021) empirically verify that women (but not men) with higher financial aptitude reject recommendations more frequently, while women in general are particularly vulnerable to receive more costly financial advice than men.

However, Hung and Yoong (2013) observe little evidence that even sophisticated consumers can perceive advice conflicts of interest. Findings by Inderst and Ottaviani (2012) accede Hung and Yoong's observation: most clients are unaware of potential conflicts of interest. Even worse, in Cain, Loewenstein and Moore (2005) paper, many participants have an excessive tendency to follow advice, even if distorting incentives behind advice are disclosed. This phenomenon is formulated by Muller and Turner (2021) as the "high-fee puzzle," which is that some people pay high-fees for financial advice and financial products when lower-fee advice and products are available.³ This contradicts the logic of Sharpe that after costs the return on the average actively managed dollar will be less than the return on the average passively managed dollar.

When 8,000 customers were offered free independent expert advice, only five percent were willing to accept the advice (Bhattacharya *et al.*, 2011). This makes apparent that customers themselves do not act in their best self-interest when it comes to financial advice. It can however be attributed to the same psychological forces described by the sunk cost's fallacy (Arkes and Blumer, 1985). Worse still, (van Swol and Sniezek, 2005) find that the only significant predictor whether the decision matches the advisor's advice is the confidence of the advisor.

Another caveat of those calling for financial literacy is that from a welfare standpoint, financial advice can avoid costly investment in financial knowledge by households. Given

² Several papers have reported that a large proportion of the population is not financially literate and cannot grasp basic concepts of inflation and risk diversification, see for instance: Lusardi and Mitchell (2007); Lusardi and Mitchell (2011) and Lusardi, Mitchell and Curto (2010).

³ Sharpe (2013) shows that a person saving for retirement who chooses low-cost investment could have a standard of living throughout retirement more than 20% higher than that of a comparable investor in high-cost investments.

the large potential loss in welfare from poor financial decisions, renting the expertise of financial professionals should be even more common than seeking the services of an attorney or an accountant (Finke, 2013).⁴

Lastly, we must address that poor financial advice has another negative aspect: it discourages saving. (Benhabib, Bisin and Luo, 2019) show that the extent to which proportional growth rates are persistent across individuals (type-dependence) or increasing in wealth (scale-dependence) generates positive feedback. This means that high rates of return tend to increase savings. This finding is supported by Feldstein (1976). Low rates of return ultimately discourage saving, a finding that should alert governments of ageing societies to act against misaligned financial advice.

3. Commission Bans

We established that most customers suffer from deep asymmetries of information, such that they often are dependent on advice from those selling to them and are not well able to assess any limitations to the advice provided. Denmark, Finland, the United Kingdom, Norway and the Netherlands, Australia and New Zealand introduced commission bans to combat this problem. These commission bans were introduced at different points in time.

Denmark's commission ban entered into force on 1 July 2017. The New Law Insurance Mediation Act in Finland introduced a general commission ban in 2005. In the United Kingdom, the ban on commissions was introduced in 2013.

Moreover, as of 2013 the Netherlands introduced a commission ban for the mediation of complex financial products like life-and investment insurances and mortgages. In 2014 a ban on commissions for the sale of investment products was introduced (Jong, 2017). Norway introduced a commission ban for independent brokers regarding non-life insurance in 2004 and in 2007 for life-and pension-insurance.

In July 2020, the Australian government introduced a commission ban on listed investment company (LIC) sales. The government in New Zealand introduced a commission ban in 2019.

On the European level, there is a consensus between national governments, EIOPA (European Insurance and Occupational Pension Authority), FSUG (Financial Services User Group) and financial supervisors that the logic of the commission-system leads to mis-selling (Jong, 2017). Paradoxically, these findings have not led to a Europe-wide introduction of commission bans. The European legislature in both Article 18 MiFID and Article 23 MiFID II (Markets in Financial Instruments Directive) simply stipulates that investment firms must take all appropriate steps to identify and prevent or manage conflicts of interest.

MiFID II, which was enacted in 2014, requires disclosure of any payment or benefit to or from the financial service provider (Jong, 2017). The original proposal for the MiFID amendment called for a Europe-wide ban on commission-based advice. However, this

⁴ Unsurprisingly, the Financial Conduct Authority (2017), which conducts robust large-scale quantitative surveys annually, concludes that all consumers and not just uneducated cannot judge the quality of financial advice. It also stresses that over-reliance on financial literacy constitutes the most significant problem to shortcomings in disclosure and financial advice.

provision was subsequently changed by the European Parliament to an optional provision where each member states is responsible for the implementation of the directive. It is argued that the EU was not able to prevail against the resistance from the financial industry.

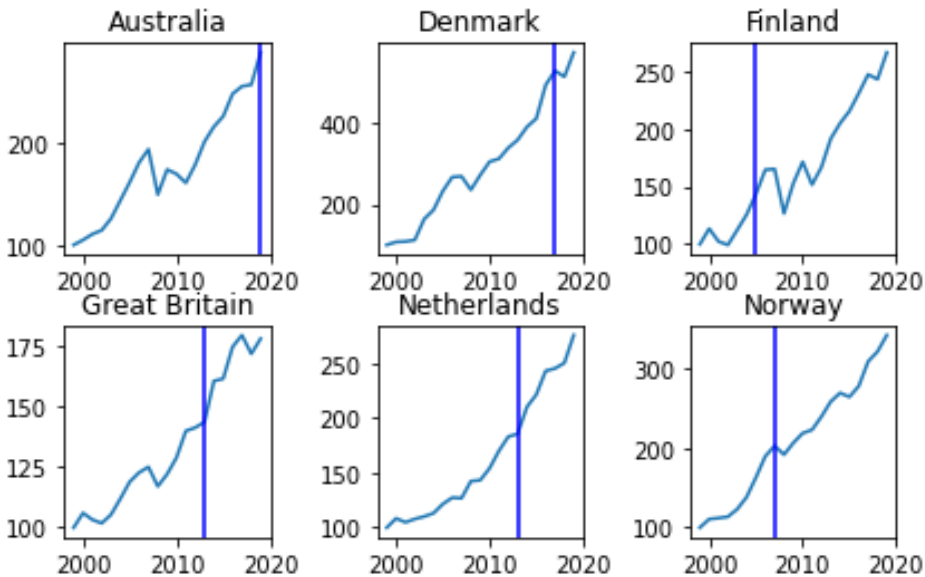
In 2015, the EU PRIIPs Regulation made it compulsory to hand out Key Information Documents (KIDs) prior to investment. For those that have held KIDs in their hands, it is questionable whether they affect customer confusion. It can be contended that the only binding EU legislation on commissions is that conflict of interest must be disclosed.

Cain, Loewenstein and Moore (2005) find that the disclosure of conflicts of interest leads to an increase of the advice bias because advisors are released from moral concern and even feel encouraged to give wrong advice. According to (Inderst and Ottaviani, 2012) a disclosure leads to a reduction of commissions but may also lead to a sales increase of more costly products.

The CMU Action Plan launched in 2005 led to no significant changes, even though it aims to ensure that retail investors in the EU are offered bias-free advice and fair treatment (European Commission *et al.*, 2023). As of beginning 2023, the EU Commission is again considering a general ban on commission-based investment advice to protect consumers from high costs and poor advice. The EU commissioned a study to feed into the development of the retail investment strategy announced for 2022 that confirmed that the cost for products that carry inducements are 24-26 percent higher than those products which do not carry inducements (European Commission *et al.*, 2023).

Considering this, our research could not be more relevant. Our research empirically analyses how commission bans impacted the investment success of private households. Figure 3 shows that there is no simple absolute effect on the wealth development when commission bans are introduced, showing that a commission ban will not lead to a loss of prosperity.

Figure 2: Development of Invested Household Wealth in Countries that Introduced Commission Bans



Finland 2005, Norway 2007, Great Britain 2013, Netherlands 2013, Denmark 2017, Australia 2019

4. Empirical Approach

In order to understand the real effect of commission bans, the previous simple comparison is not enough. Therefore, we retrieved annual OECD data from 1996-2020 for all available countries. By implementing a two-ways fixed effects model we are able to account for both country as well as time fixed effects and find the impact of commission bans.

Our focus lies on the influence of commission-based consulting on the returns on the invested wealth. We therefore analyze the development of household wealth while accounting for savings.

4.1. Data Overview

Table 1 gives a short introduction to our main indicators, retrieved from 1997-2020. They include 568 unbalanced panel observations from 38 countries (see Table 2). The first of the six commission bans in this sample was introduced by Finland in 2005. All absolute values are denoted in USD to account for different real returns due to the varying inflation over time and currencies.

Table 1. Overview Dependent and Independent Variables

Independent Variable	Unit	Source
Social contributions	% of GDP	OECD
Working population	% of total population	OECD
Education	% of total population which achieved a tertiary education	OECD
Share of female population	% of total population	World Bank
Dependent Variable	Unit	Source
Return on Invested Wealth	%	Self-calculated/OECD

Our dependent variable is the approximate performance of invested money of all private households. We use the intuitive definition of invested money by assuming that investments happen at the end of the period:

$$Invested\ Wealth_t = Invested\ Wealth_{t-1} * (1 + Return_t) + Savings_t$$

Therefore, we extract the wealth gain less savings (i.e. household wealth development less currency, deposits and savings).

$$Return_t = \left(\frac{Invested\ Wealth_t}{Invested\ Wealth_{t-1}} \right) - Savings_t - 1$$

We define invested wealth as the total wealth of households excluding currency and deposits. Therefore, we focus on the selection ability within one asset class of investors instead of the strategic asset allocation, determined by the household's risk appetite (Sharpe 1964, Lintner 1965).

$$Invested\ Wealth\ in\ USD_i = Wealth\ in\ USD_i * (1 - \% Currency\ and\ Deposits_i)$$

Our dependent variable contains the wealth held in life insurances, mutual funds, pension funds, securities other than shares as well as shares and other equities. Our savings variable is defined as the saving rate in percent of household wealth.

For control variables we include social contribution, tertiary education, percent working population, as well as the percentage of females out of the total population.

As our data includes outliers, we correct for the most extreme data points by removing changes in wealth of more than 20 percent. We also remove countries with missing values (i.e., Brazil, Russia, New Zealand and Colombia).

Table 2: Commission Ban in OECD Countries
(as of 2021)

Country	Commission ban
Finland	Yes (2005)
Great Britain	Yes (2012)
Netherlands	Yes (2013)
Norway	Yes (2007)
Australia	Yes (2019)
Denmark	Yes (2017)
Austria	No
Belgium	No
Canada	No
Czech	No
France	No
Germany	No
Greece	No
Hungary	No
Iceland	No
Ireland	No
Italy	No
Japan	No
Korea	No
Luxemburg	No
Mexico	No
Poland	No
Portugal	No
Slovakia	No
Spain	No
Sweden	No
Switzerland	No
USA	No
Chile	No
Estonia	No
Israel	No
Slovenia	No
Turkey	No
Brazil	No
Latvia	No
Lithuania	No
South Africa	No
India	No

Except for Western Europe, we use the standard MSCI classification for our region groups.

4.2. Empirical Specification

Figure 3: Household Wealth Development

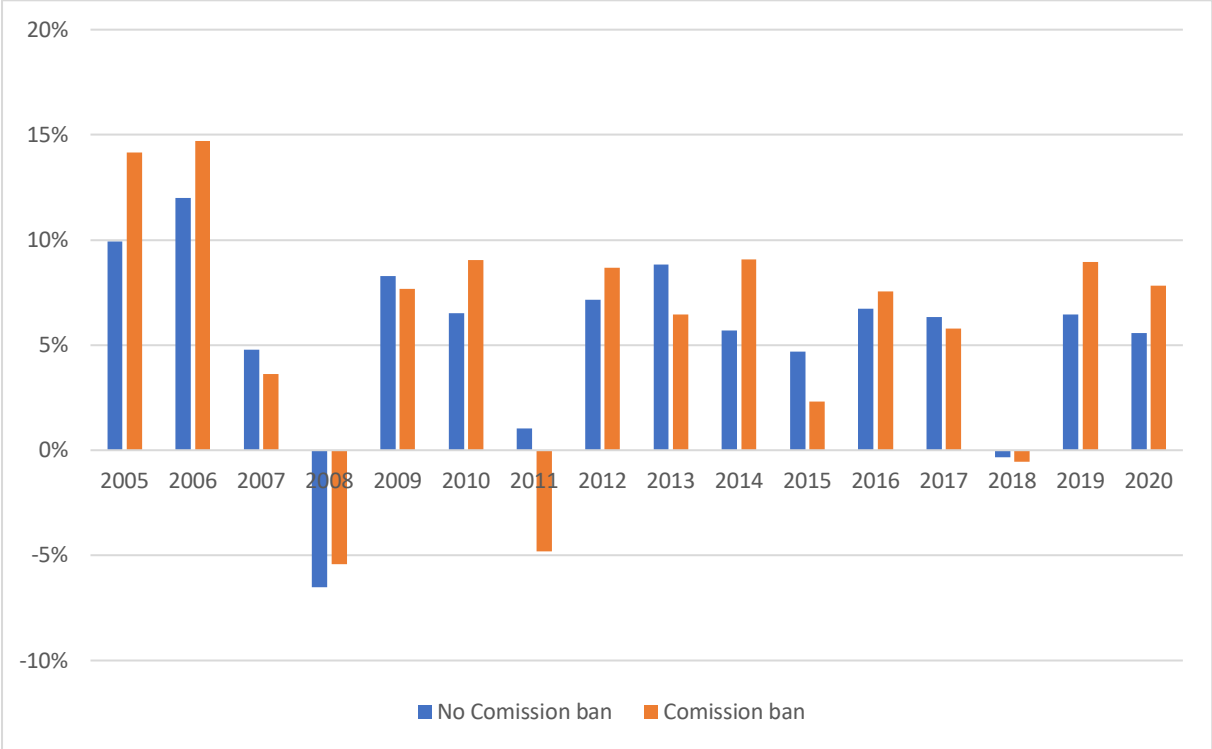


Figure 3 shows the average wealth development for households in countries with commission bans compared to countries without it. Visualizing our data does not convey a clear trend. Households with commission ban experience a slightly increased average annual development of wealth of 5.9 percent, whereas households without commission bans display a 5.4 percent annual household wealth development.

This already shows that countries with a commission ban might be better off. It is important to point out that the number of commission ban countries increased slowly over time. For instance, there was no country with a commission ban in place before 2005. Finland was the first country to introduce one with others following in different years (2007, 2012, 2013, 2017, 2019). Therefore, the simple comparison of wealth gains is impacted by the timing and number of countries.

Moreover, country specific effects, especially when there were few commission ban countries, impact our dependent variable. For instance, historical and cultural differences in the allocation between assets differ for countries. A specific example are the different stock market participation rates in our dataset. Figure 4 exhibits that some countries have a relatively low share, for instance the United Kingdom or Germany, with allocations close to 10 percent. In contradistinction, Australia and especially the US show much higher stock market participation rates.

Figure 4: Percentage Share of Equity of Total Financial Assets Held By Households

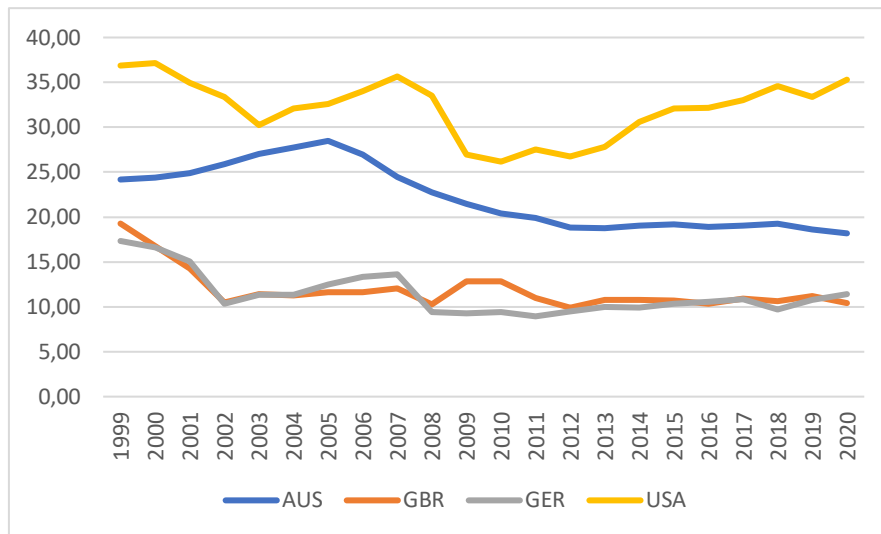
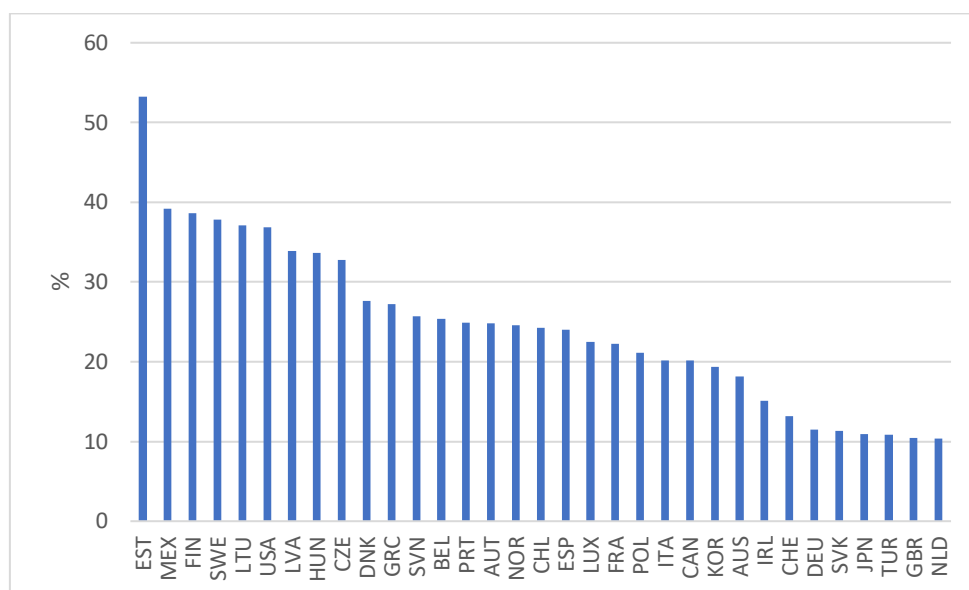


Figure 5 demonstrates the disparity between countries when it comes to equity investments. Partly these can be explained by different stock market culture, but also different tax systems between countries.⁵ Our paper, however, focuses on the return of invested assets rather than the allocation of assets.

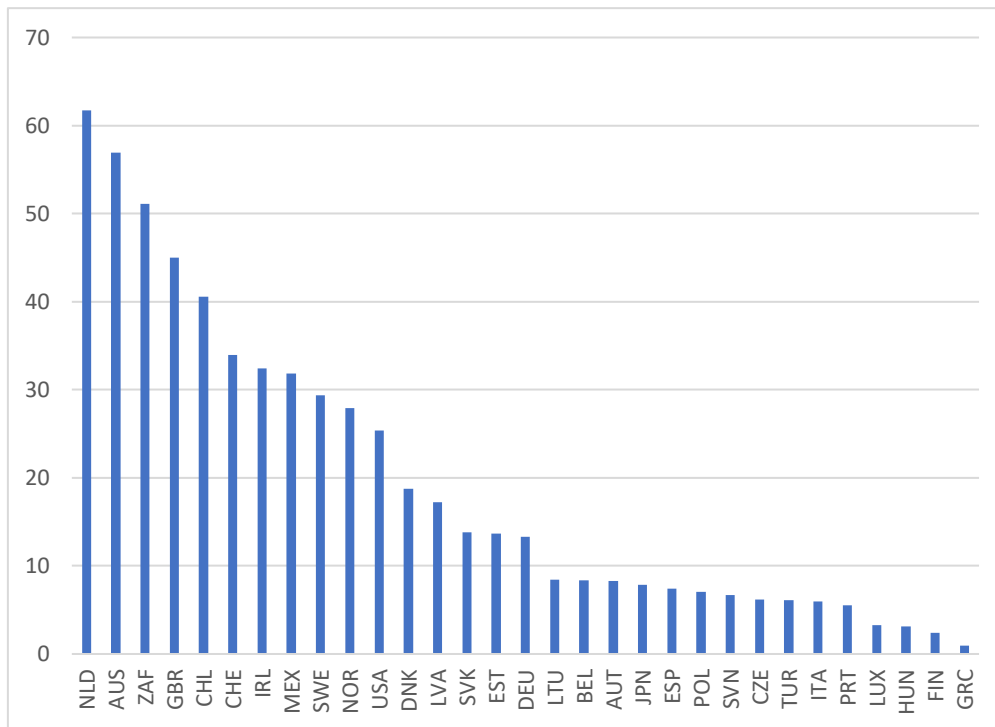
In countries with more generous and stable social benefits, pensions and health insurance, households tend to have a less urgent need to accumulate assets for life cycle and precautionary motives as insurance against adverse income and health shocks (Finance and Network, 2013). This explains for instance why households in the Netherlands hold the lowest percentage of equity of total financial assets in the OECD (see Figure 6).

Figure 5: Percentage Share of Equity of Total Financial Assets Held by Households (2020)



⁵ For an overview on tax-minimizing portfolio strategies see for example Poterba and Shoven (2002).

Figure 6: Percentage Share Pension of Total Financial Assets Held by Households (2020)



In our model, we will overcome issues of country-specific factors by including country fixed effects and heteroskedasticity corrected standard error. In addition, stock, and fixed income investments are sensitive to market shocks such as for instance the global financial crisis in 2009. To consider year-specific changes in wealth performance we introduce time-fixed effects.

For the above-mentioned reasons and as it is commonly used in the literature, we implement a two-ways fixed effects model:⁶

$$Y_{i,t} = CFE_i + TFE_t + \beta * CommissionBans_{i,t} + X, \text{ where}$$

$Y_{i,t}$: dependent variable at time t for country i

CFE_i : Country I fixed effects

TFE_t : Time fixed effects at t

$CommissionBans_{i,t}$: Boolean dummy variable when commission ban is implemented in country I and time t

β : estimated impact of commission ban

X: (optional) control variables

⁶ See e.g. Roth *et al.* (2022) for an overview.

The main hypothesis that we investigate is:

H0: households in countries with commission bans do not show higher returns compared to countries without commission bans.

H1: households in countries with commission bans exhibit higher returns compared to countries without commission bans.

4.3. Results

Table 1: The Effect of Commission Bans on Household Wealth (Global Results)

No. Observations	568	568
R-squared	0.8223	0.8363
Adj. R-Squared	0.8036	0.8177
F-statistic	107.8611	127.4823
P-value(F-stat)	0.0000	0.0000
Commission Bans	1.7035*** (2.8004)	1.1812** (1.9768)
Region	Total	Total
Incl. Control Variables?	No	Yes

***=1%, **=5%, *=10%, t values in parentheses

Introducing a commission ban translates to a relative increase in household wealth returns significantly by 1.7 percent p.a. Even when accounting for control variables, the outperformance persists (1.2 percent p.a.). The added explanatory power by the control variables is relatively low, as they are rather static compared to the wealth development.

While these results already show a clear picture, they might even underestimate the effects, as treat the United States and Sweden as countries without commission ban. Here, fee-based financial advice (contrary to commission-based advice) is widely spread but there is no explicit ban. The results are robust when we take these 'quasi commission ban' countries into account (see Appendix).

As most countries that introduced commission bans are European, we further analyze this group. Here, a more homogeneous group of countries might change the overall results.

Table 2: The Effect of Commission Bans on Household Wealth (European Results)

No. Observations	417	417
R-squared	0.7943	0.8184
Adj. R-Squared	0.7694	0.7943
F-statistic	56.6014	72.4788
P-value(F-stat)	0.0000	0.0000
Commission Bans	2.0756*** (3.1915)	1.7382*** (2.6461)
Region	Europe	Europe
Incl. Control Variables?	No	Yes

***=1%, **=5%, *=10%, t values in parentheses

Even when only analyzing European countries, the impact of commission bans is highly positive and significant (see Table 2). The effect increases to above 2 percent or 1.74 percent when taking controls into account. We can conclude that commission bans significantly positively impact household wealth returns.

Modelling the Impact of Commission Bans

Furthermore, we model the real-life impact of a commission ban using our results for Europe from Subsection 3.3. We analyze the effect in wealth changes with the following equation:

$$Wealth_{t+1} = Wealth_t * (1 + ret_t) + SavingsPlan_t$$

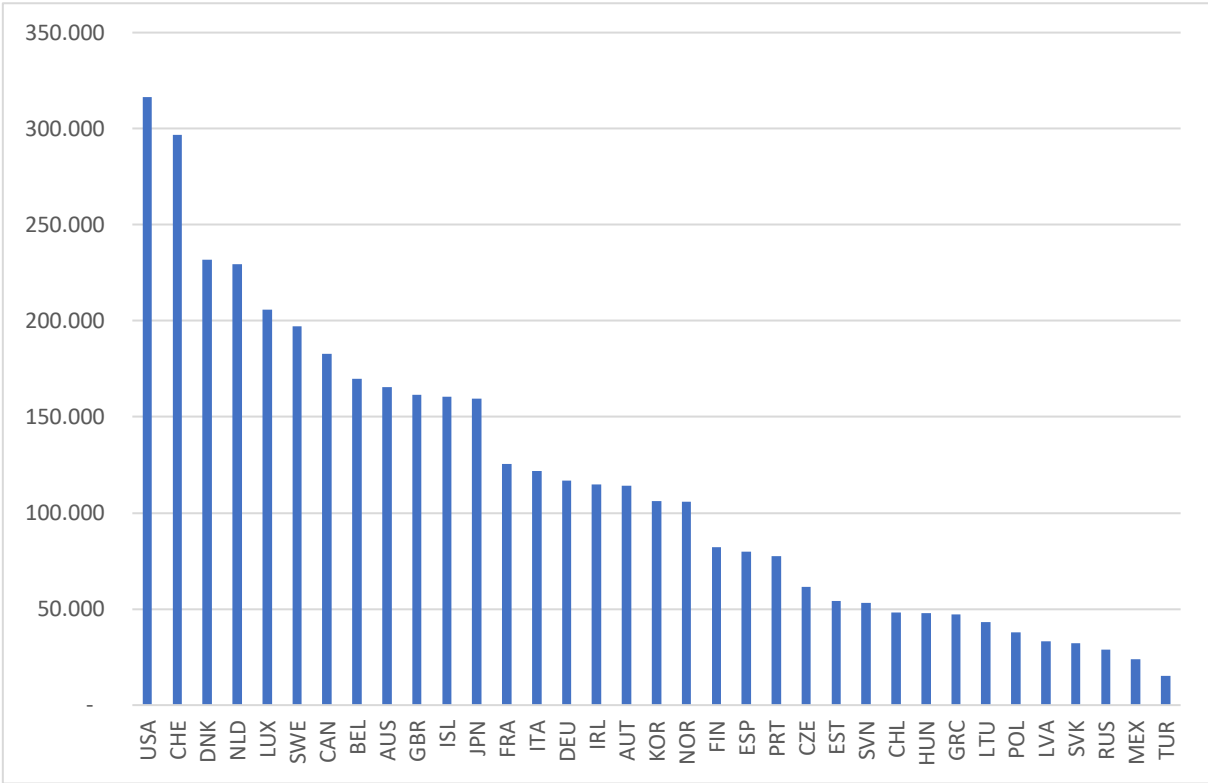
With a return difference of ~1.7 percent, we find that after 40 years (average lifetime of pension plans) a private household in a commission ban country with initial savings of 100.000 € and a yearly savings plan of 1.200 € will have ~750.000 € or 84 percent more of their average invested money for their pension when the base return is 5.2%. This is in line with Sharpe (2013), who finds that retirees who saved in low-cost investment products have a standard of living 20 percent higher compared to those that invested into high-cost financial products. Further calculations can be found in Table 3.

$$Wealth_r = Savings_t * (1 + r)^n + \sum_{t=1}^n Savings_t * (1 + r)^{n-t}$$

Table 3: Difference in Wealth Outcomes between Commission-Ban countries vs. Non-Commission-Ban Countries (Timespan: 40 years)

	Initial Investment (€)	Yearly Savings Plan (€)	Added value through commission ban (€)	Added value in % of average investments
(1)	-	1,200	81,240	53%
(2)	-	6,000	406,202	53%
(3)	-	12,000	812,405	53%
(4)	50,000	1,200	422,639	79%
(5)	50,000	6,000	747,601	66%
(6)	50,000	12,000	1,153,803	61%
(7)	100,000	1,200	764,037	84%
(8)	100,000	6,000	1,088,999	72%
(9)	100,000	12,000	1,495,201	66%

Figure 7: Average Household Wealth for all Countries (2020)



Our results also allow us to calculate wealth gained for countries with a commission ban in the same manner as above:

$$AdditionalWealth_{Country\ i} = \sum_{\forall t\ with\ comission\ ban} n_{Households,i,t} * r_{Difference}$$

Table 4 summarizes the wealth gained from commission bans. In total, introducing a commission ban added ~900 billion household wealth to this date.

Table 4: Wealth gained from Commission Ban (in mln USD)

<u>Total</u>	<u>893,899</u>
<u>AUS</u>	<u>53,411</u>
<u>DNK</u>	<u>37,798</u>
<u>FIN</u>	<u>39,647</u>
<u>GBR</u>	<u>524,726</u>
<u>NLD</u>	<u>194,172</u>
NOR	44,146

4.4. Factors for a Commission Ban

Our results from Subsection 3.3. show that our control variables have an influence on household wealth formation, especially in Europe. The following logit regression model aims to help us draw conclusions about the country specific characteristics that increase the probability of a commission ban:

$$\log\left(\frac{P_{i,t}}{1-P_{i,t}}\right) = \beta_0 + \beta * X_{i,t}, \text{ where}$$

$P_{i,t}$: Probability that the country i has a commission ban in effect at time t

β : Estimated impact of variables

X: control variables

Table 5: Effect of Control Variables on Likelihood of a Commission Ban

No. Observations	568	417
Pseudo R-squared	0.33	0.47
Log-Likelihood	-105.88	-74.56
P-value(LLR)	0.0000	0.0000
SocialContr	0.088098** (1.9641)	0.165874** (2.4141)
TertiaryEd	0.069591*** (2.6802)	0.297164*** (4.9035)
%WorkingPop	-0.458773*** (-4.6285)	0.4905 (0.0280)
Population, female (% of total population)	-2.439634*** (-5.1947)	-1.581930*** (-3.2532)
Region	Total	Europe
Incl. Time Fixed Effects?	No	No

***=1%, **=5%, *=10%, t values in parentheses

The percentage of social contributions have a significant positive effect on the likelihood of a country introducing a commission ban for all our regressions. This result supports the idea that countries with a strong social welfare system also prioritize consumer financial protection in form of commission bans, which we have shown to have a positive performance impact.

In addition, high tertiary education, which correlates positively with financial literacy, increases the probability of introducing a commission ban significantly in all regions. A well-educated public might be easier to convince and mobilize for the introduction of a commission ban. Our results show that an educated public is a prerequisite for introducing a market intervention such as commission bans.

Especially countries with a high percentage of working population, who save wealth during their working lives, require qualified and optimal financial advice for their savings decisions (van de Ven and Fano, 2017). Our results, however, predict a low probability for countries with a high employment rate to introduce a commission-ban at least globally and in developed countries. It might be that in more developed countries where ageing societies

are more common, comparably high financial wealth of households sparks more interest in questions around optimal financial advice laying the ground for commission ban. For Europe and Western Europe, we do not find any significant relationship.

Moreover, a high percentage of female population decreases the prospect of a commission ban significantly in every region considered. Both models show a significant negative effect for western Europe at a 1 percent level. This supports research by (Bucher-Koenen *et al.*, 2021) who show that female clients are recommended more costly products by financial advisors compared to men. Women state a preference for delegating decisions but appear unaware of associated higher costs. According to (Bluethgen *et al.*, 2008) being male is positively correlated with the equity fraction of the respective portfolio. In this context, our results are unsurprising but shed light on potentially vulnerable groups who require stronger protection through strong legislation such as a commission ban.

5. Policy debate

Our results show that commission bans increase the rate of return on wealth for private households. This begs the question what alternatives are there?

The main alternative to a commission-based system is fee-based financial advice. Fee-based financial advice means paying the financial advisor directly. Irrespective of the benefits of resolving the conflict of interest induced by commission-based financial advice, there are indications that some groups of consumers are struggling to pay directly for financial advice (Jong, 2017). Also, the fixed fee model is not fully free of conflict of interest itself as it can lead to shirking and over-billing.

Another common issue with fee-based financial advice is that those consumers able to pay for fee-based financial advice, are not always prepared or willing to pay directly for advice. As Jong, (2017) discovers: consumers tend to choose the cheapest form of advice instead of the best advice. This logic is however flawed. Compared to fee-based financial advice, commission based financial advice simply 'feels' free of charge. In most cases, consumers are oblivious to the fact that commission based financial advice is financed by the fees included in the price of the financial instrument. Our own results also support this finding and add to the debate.

Another alternative are asset-based models, which tie the compensation to the performance. The advisor receives a small percentage of assets under management. Theoretically, this performance-based payment should align interests of advisors and investors as both parties are better off when the investment increases in value. But the advisor might also try to increase assets under management and thus decrease investments outside the fee arrangement. We encourage future research on both fee-based and asset-based models.

Research by (Finke, 2013) shows that a key issue for households seeking financial advice is understanding how differences in compensation methods and regulatory frameworks affect incentives of financial advisors. Based on this finding, commission bans will need to be accompanied by educational programs that teach the impact of costs on the performance of financial vehicles. Financial education programs designed by Lusardi *et al.* for instance

cover this area of financial knowledge among a range of topics, yet we do not see the topic of costs prioritized to the extent that might be necessary to stick with the public.

Whereas educational programs in developing countries without functioning financial advice markets should emphasize basic financial knowledge, in developed countries these programs need to address the elephant in the room: incentive biases of financial advisors. Financial education alone will not do the job as commission compensation is generally opaque since many investors are unaware of how much they pay for investment loads, and disclosure does not appear to alleviate this confusion (Beshears *et al.*, 2009).

Governments who rallied and rally against commission bans such as Germany, France and Italy see commission bans as an unfavorable free market intervention. Sadly, they fail to notice that a commission-based system innately leads to less competition - a core fundament of a free market - between financial advisors. When advice is seen as free of charge, consumers will not necessitate comparing providers. At the same time, agents who recommend lower-cost, lower commission products will ultimately be forced out of business by agents recommending less suitable, higher-commission products who are able to use the excess revenues to increase marketing expenses, rent more expensive office suits, and hire more talented employees (Jong, 2017). This adverse selection will prevail unless commissions are banned. (Bolton, Freixas and Shapiro, 2007) show that conflicts of interest are reduced by competition, something a commission-based system will not enable.

Commission bans are not the only potential solution to fostering a fair competition between financial advisors. Well performing contribution plans or governmental pension funds such as in Norway or the Netherlands foster competition by setting a strong benchmark to beat for the private industry. The fact that countries with investment-based pension contribution plans also implemented a commission ban speaks for itself.

Another issue that is often addressed in the realm of the debate is that the number of financial advisors would dramatically decrease because of a commission ban. This prediction does not find empirical evidence in countries that have introduced commission bans or at least stricter fiduciary standards. The Netherlands for instance has not seen an extra decrease of independent financial advisors (Jong, 2017). This is supported by the UK Financial Conduct Authority (2020), which finds, that the number of Financial Advisors in the UK rose by 4% since 2012 with the commission ban in place since 2013. Furthermore, (Finke and Langdon, 2012) discover no evidence in the US that stricter fiduciary standards with regards to commission-based financial advice reduce the number of registered representatives within the state, or negatively impact representative's ability to provide services to lower-wealth clients.

Theoretically, (Thiel, 2020) shows that commission bans are associated with so called "advice gaps", meaning that advice becomes less accessible as financial advisors are squeezed out of the market. Although this phenomenon might theoretically exist, our results reveal that a potential "advice gap" does not necessarily have to be bad. Instead, no advice can be better than advice at all when the advice given is flawed by conflict of interest. Low-cost products, such as exchange-traded funds (ETFs), are rarely offered to investors because these low-margin products do not pay a commission to distributors, however ETFs can be bought self-sufficiently through any online broker nowadays and the average

passively invested dollar has been proven to have a higher return after costs than averagely actively managed dollar.

For future research, it is important to learn from the experiences in countries. In particularly with micro-level data and case studies for countries that have introduced commission bans in the past. While our research aims to answer the question on a cross-country level, it fails to analyze the effects of commission bans in more depth on a national level.

6. Conclusion

Our paper addresses the effect of commission bans on wealth formation. The academic literature presented draws a clear picture of the principal agent problem inherent in the financial advice industry. Although misaligned incentives of financial advisors created by commission-based systems have been shown to have a negative impact on the quality of financial advice, many countries decided not to introduce commission bans. In the European Union, only five including the UK countries followed the recommendation of the Commission to ban commission-based financial advice. This policy discrepancy enabled our empirical research.

We compared OECD data on wealth to calculate the difference in return on wealth between commission countries versus commission-ban countries. Our regressions show positive significant effects of commission bans on wealth formation in all OECD countries. This effect is even stronger for Europe. Countries with commission-bans in place have seen an outperformance of their wealth between 1.7 percent and 2 percent annually.

To fully understand the economic extent of our results we model the impact of commission bans in absolute number. We find that a household in a commission-ban country achieves wealth levels double the amount of a household in a non-commission-ban country over the period of 40 years with the most conservative estimate (typical timespan for retirement provision). On the macro-level we calculate how much additional private wealth formation commission-bans have created. In total, countries that have implemented commission bans realized ~900 billion USD access wealth formation compared to countries without commission bans. Especially the UK, with the highest number of households among commission-ban countries and a comparably long time-period with commission ban in place, saw a substantial increase of additional household wealth of ~524 billion USD since 2013.

In another step, we try to explain whether certain characteristic increase the likelihood of a commission ban. Our logit regression model indicates that countries have a higher probability of introducing a commission ban when they have strong social security system, high educational levels among society, and a low percentage of female population. This result is alarming: if countries, which are already economically strong also implement better policies to foster wealth formation then ultimately standard of livings will diverge between OECD countries.

We hope our paper sparks new interest in academic research on measures that promise and deliver private household wealth creation in times of ageing societies and pressurized pension systems. Our results support the EU's attempt to introduce a mandatory European-wide commission ban.

Appendix

Table 7: Descriptives

	Wealth return	Commission ban	SocialContr	TertiaryEd	%WorkingPop	Female Pop (%)
count	580	580	580	580	580	580
mean	-3.85	0.08	9.94	30.63	66.73	51.13
std	5.17	0.27	4.38	10.59	2.22	1.00
min	-27.22	0	0.00	8.84	59.50	49.47
25%	-5.94	0	6.45	23.37	65.35	50.45
50%	-3.61	0	11.25	31.03	66.64	50.91
75%	-1.48	0	13.30	38.42	68.00	51.48
max	33.02	1	17.66	59.96	73.42	54.21

Table 8: Correlation Matrix

	Wealth return	Commission ban	SocialContr	TertiaryEd	%WorkingPop	Female Pop (%)
Return Wealth	1.0000	-0.1690	-0.0076	-0.1050	-0.1578	0.2299
Commission ban		1.0000	-0.0145	0.2740	-0.2383	-0.2185
SocialContr			1.0000	-0.3123	-0.0305	0.2517
TertiaryEd				1.0000	-0.2867	-0.3940
%WorkingPop					1.0000	-0.0162
Female Pop (%)						1.0000

**Table 9: Results including USA and SWE
as Commission Ban Countries (Total)**

No. Observations	568	568
R-squared	0.8215	0.8364
Adj. R-Squared	0.8028	0.8178
F-statistic	116.6641	127.1272
P-value(F-stat)	0.0000	0.0000
Commission Bans	1.0695** (2.4206)	1.2562** (2.1096)
Region	Total	Total
Incl. Control Variables?	No	Yes

**Table 10: Results including USA and SWE
as Commission Ban Countries (Europe)**

No. Observations	417	417
R-squared	0.7943	0.8184
Adj. R-Squared	0.7694	0.7943
F-statistic	56.6014	72.4788
P-value(F-stat)	0.0000	0.0000
	2.0756*** (3.1915)	1.7382*** (2.6461)
Comission Bans		
Region	Europe	Europe
Incl. Control Variables?	No	Yes

Bibliography

- Akerlof, G.A. (1970) 'The Market for "Lemons": Quality Uncertainty and the Market Mechanism', *The Quarterly Journal of Economics*, 84(3), p. 488. doi: 10.2307/1879431
- Anagol, S., Cole, S. and Sarkar, S. (2017) 'Understanding the advice of commissions-motivated agents: Evidence from the Indian life insurance market', *Review of Economics and Statistics*, 99(1), pp. 1–15.
- Anagol, S. and Kim, H.H. (2012) 'The Impact of Shrouded Fees: Evidence from a Natural Experiment in the Indian Mutual Funds Market', *American Economic Review*, 102(1), pp. 576–593. doi: 10.1257/aer.102.1.576
- Arkes, H.R. and Blumer, C. (1985) 'The psychology of sunk cost', *Organizational Behavior and Human Decision Processes*, 35(1), pp. 124–140. doi: 10.1016/0749-5978(85)90049-4
- Bas, P. de, Bruggert, F. and van der Lijn, N. (2004) *Marktwerking op de markt voor hypothecaire kredietverlening: analyse van de markt voor hypotheekverstrekking en de markt voor advies door tussenpersonen*. Rotterdam.
- Benhabib, J., Bisin, A. and Luo, M. (2019) 'Wealth Distribution and Social Mobility in the US: A Quantitative Approach', *American Economic Review*, 109(5), pp. 1623–1647. doi: 10.1257/aer.20151684
- Beshears, J. *et al.* (2009) 'How Does Simplified Disclosure Affect Individuals' Mutual Fund Choices?' *National Bureau of Economic Research*. doi: 10.3386/w14859
- Bhattacharya, S. and Thakor, A.V. (1993) 'Contemporary Banking Theory', *Journal of Financial Intermediation*, 3(1), pp. 2–50. doi: 10.1006/jfin.1993.1001
- Bhattacharya, U. *et al.* (2011) 'Can Unbiased Financial Advice Steer Retail Investors Towards Efficient Portfolios? Answers from a Large Field Study', *SSRN Electronic Journal*. doi: 10.2139/ssrn.1787255
- Bluethgen, R. *et al.* (2008) *Financial Advice and Individual Investors' Portfolios*.
- Bolton, P., Freixas, X. and Shapiro, J. (2007) 'Conflicts of interest, information provision, and competition in the financial services industry', *Journal of Financial Economics*, 85(2), pp. 297–330. doi: 10.1016/j.jfineco.2005.06.004
- Bucher-Koenen, T. *et al.* (2021) 'Fearless Woman: Financial Literacy and Stock Market Participation', *National Bureau of Economic Research*. doi: 10.3386/w28723
- Cain, D.M., Loewenstein, G. and Moore, D.A. (2005) 'The Dirt on Coming Clean: Perverse Effects of Disclosing Conflicts of Interest', *The Journal of Legal Studies*, 34(1), pp. 1–25. doi: 10.1086/426699
- Calvet, L.E., Campbell, J.Y. and Sodini, P. (2007) 'Down or Out: Assessing the Welfare Costs of Household Investment Mistakes', *Journal of Political Economy*, 115(5), pp. 707–747. doi: 10.1086/524204
- Calvet, L.E., Campbell, J.Y. and Sodini, P. (2009) 'Measuring the Financial Sophistication of Households', *American Economic Review*, 99(2), pp. 393–398. doi: 10.1257/aer.99.2.393
- Campbell, J.Y. (2006) 'Household Finance', *The Journal of Finance*, 61(4), pp. 1553–1604. doi: 10.1111/j.1540-6261.2006.00883.x

- Darby, M.R. and Karni, E. (1973) 'Free Competition and the Optimal Amount of Fraud', *The Journal of Law and Economics*, 16(1), pp. 67–88. doi: 10.1086/466756
- European Commission *et al.* (2023) *Disclosure, inducements, and suitability rules for retail investors study : final report*: Publications Office of the European Union.
- Feldstein, M. (1976) 'Temporary layoffs in the theory of unemployment', *Journal of Political Economy*, 84(5), pp. 937–957.
- Finance, E.H. and Network, C. (2013) *The Eurosystem Household Finance and Consumption Survey-results from the first wave*.
- Financial Conduct Authority (2017) *Financial Advice Market Review: Baseline Report*. Available at: <https://www.fca.org.uk/publication/research/famr-baseline-report.pdf>.
- Financial Conduct Authority (2020) *Evaluation of the impact of the Retail Distribution Review and the Financial Advice Market Review*. Available at: <https://www.fca.org.uk/publication/corporate/evaluation-of-the-impact-of-the-rdr-and-famr.pdf>.
- Finke, M. (2013) 'Financial Advice: Does it make a difference?' *The Market for Retirement Financial Advice*, 229, p. 248.
- Finke, M.S. and Langdon, T.P. (2012) *The Impact of the Broker-Dealer Fiduciary Standard on Financial Advice*.
- Finkelstein, A. (2009) 'E-ZTAX : Tax Salience and Tax Rates *', *The Quarterly Journal of Economics*, 124(3), pp. 969–1010. doi: 10.1162/qjec.2009.124.3.969
- Gaudecker, H.M. von (2015) 'How Does Household Portfolio Diversification Vary with Financial Literacy and Financial Advice?' *The Journal of Finance*, 70(2), pp. 489–507. doi: 10.1111/jofi.12231
- Golec, J.H. (1992) 'Empirical Tests of a Principal-Agent Model of the Investor-Investment Advisor Relationship', *The Journal of Financial and Quantitative Analysis*, 27(1), p. 81. doi: 10.2307/2331299
- Gorter, J. (2012) *Commission Bans and the Source and Quality of Financial Advice*.
- Hackethal, A., Haliassos, M. and Jappelli, T. (2012) 'Financial advisors: A case of babysitters?' *Journal of Banking & Finance*, 36(2), pp. 509–524.
- Hackethal, A. and Inderst, R. (2013) 'How to make the market for financial advice work', *The Market for Retirement Financial Advice*, pp. 213–228.
- Hoechle, D. *et al.* (2018) 'Financial Advice and Bank Profits', *The Review of Financial Studies*, 31(11), pp. 4447–4492. doi: 10.1093/rfs/hhy046
- Hung, A. and Yoong, J. (2013) 'Asking for help: Survey and experimental evidence on financial advice and behavior change', *The Market for Retirement Financial Advice*, 182.
- Inderst, R. and Ottaviani, M. (2012) 'Competition through Commissions and Kickbacks', *American Economic Review*, 102(2), pp. 780–809. doi: 10.1257/aer.102.2.780
- Jones, M.A., Lesseig, V.P. and Smythe, T.I. (2005) 'Financial advisors and multiple share class mutual funds', *Financial Services Review*, 14(1), pp. 1–20.
- Jong, F. de (2017) 'A commission ban for financial advice: Lessons learned from The Netherlands', *Remuneration of Financial Intermediaries Conference, Amsterdam, The Netherlands, November*.

- Jurre Thiel (2020) 'Competition, Dynamic Pricing and Advice in Frictional Markets: Theory and Evidence from the Dutch Market for Mortgages', 97890361. Available at: <https://research.cbs.dk/en/publications/competition-dynamic-pricing-and-advice-in-frictional-markets-theo>.
- Kramer, M.M. (2012) 'Financial Advice and Individual Investor Portfolio Performance', *Financial Management*, 41(2), pp. 395–428. doi: 10.1111/j.1755-053X.2012.01185.x
- Lusardi, A. and Mitchell, O.S. (2007) *Financial Literacy and Retirement Planning: New Evidence from the Rand American Life Panel*.
- Lusardi, A. and Mitchell, O.S. (2008) 'Planning and Financial Literacy: How Do Women Fare?' *American Economic Review*, 98(2), pp. 413–417. doi: 10.1257/aer.98.2.413
- Lusardi, A. and Mitchell, O.S. (2011) 'Financial Literacy Around The World: An Overview', *Journal of Pension Economics and Finance*, 10(4), pp. 497–508. doi: 10.1017/s1474747211000448
- Lusardi, A., Mitchell, O.S. and Curto, V. (2010) 'Financial Literacy among the Young', *Journal of Consumer Affairs*, 44(2), pp. 358–380. doi: 10.1111/j.1745-6606.2010.01173.x
- Mankiw, N. and Zeldes, S.P. (1991) 'The consumption of stockholders and nonstockholders', *Journal of Financial Economics*, 29(1), pp. 97–112. doi: 10.1016/0304-405x(91)90015-c
- Markowitz, H. (1952) 'The Utility of Wealth', *Journal of Political Economy*, 60(2), pp. 151–158. doi: 10.1086/257177
- Muller, L.A. and Turner, J.A. (2021) 'Financial Literacy, the "High-Fee Puzzle," and Knowledge about the Importance of Fees', *The Journal of Retirement*, 8(3), pp. 29–38. doi: 10.3905/jor.2020.1.078
- Poterba, J.M. and Shoven, J.B. (2002) 'Exchange-traded funds: A new investment option for taxable investors', *American Economic Review*, 92(2), pp. 422–427.
- Roth, J. *et al.* (2022) 'What's trending in difference-in-differences? A synthesis of the recent econometrics literature', *arXiv preprint arXiv:2201.01194*.
- Santomero, A.M. (1984) 'Modeling the Banking Firm: A Survey', *Journal of Money, Credit and Banking*, 16(4), p. 576. doi: 10.2307/1992092
- Sharpe, W.F. (2013) 'The Arithmetic of Investment Expenses', *Financial Analysts Journal*, 69(2), pp. 34–41. doi: 10.2469/faj.v69.n2.2
- van de Ven, P. and Fano, D. (2017) *Understanding Financial Accounts*: OECD.
- van Swol, L.M. and Sniezek, J.A. (2005) 'Factors affecting the acceptance of expert advice', *The British Journal of Social Psychology*, 44(Pt 3), pp. 443–461. doi: 10.1348/014466604X17092
- Yao, R. and Zhang, H.H. (2005) 'Optimal Consumption and Portfolio Choices with Risky Housing and Borrowing Constraints', *The Review of Financial Studies*, 18(1), pp. 197–239. doi: 10.1093/rfs/hhh007